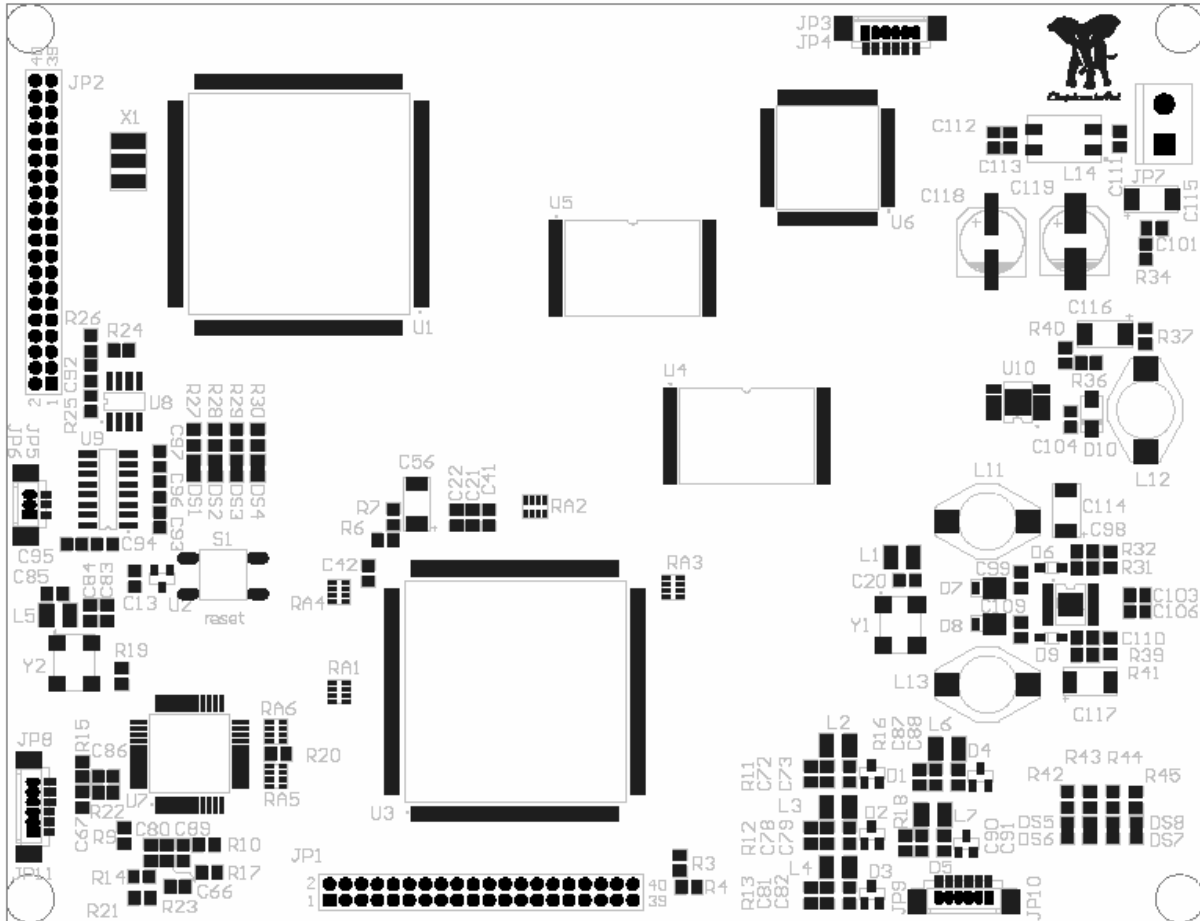


BOARD



Board dimensions: 150mm x 115mm

Description

The GraphicPlatform board is all what you need for developing with Fujitsu GDC Scarlet and Fujitsu microcontroller MB91F362.

Technical characteristics:

- Microcontroller MB91F362
- GDC MB86291 (SCARLET)
- 32Mbit Flash
- n° 2 RS232 interface
- RS485 interface
- RGB888 digital video output
- analog video output
- n°3 analog video input selectable (via I2C command)
- expansion connector (analog input, digital input, I2C interface, USART interface, etc... see connector description)

JP1 – RGB888 out			
PIN	DESC	PIN	DESC
1	GND	21	GO4
2	DCLKO	22	GO5
3	DCLKI	23	GO6
4	HSYNC	24	GO7
5	VSYNC	25	GND
6	GND	26	GND
7	RO0	27	BO0
8	RO1	28	BO1
9	RO2	29	BO2
10	RO3	30	BO3
11	RO4	31	BO4
12	RO5	32	BO5
13	RO6	33	BO6
14	RO7	34	BO7
15	GND	35	+5V
16	GND	36	+5V
17	GO0	37	GND
18	GO1	38	GND
19	GO2	39	GND
20	GO3	40	GND

JP5 – Program connector	
PIN	DESC
1	GND
2	TX (micro Uart4 TX) RS232level
3	RX (micro Uart4 RX) RS232level

JP7 – DC power input	
PIN	DESC
1	+12V
2	GND

JP10 – analog video out	
PIN	DESC
1	HSYNC
2	VSYNC
3	RED
4	GREEN
5	BLUE
6	Analog GND

JP8 – analog video in	
PIN	DESC
1	VideoIN1 (SAA7113 ch AI21)
2	Analog GND
3	VideoIN2 (SAA7113 ch AI11)
4	Analog GND
5	VideoIN3 (SAA7113 ch AI12)
6	Analog GND

JP2 – expansion connector	
PIN	DESC
1	GND
2	RS232 AUX RX (micro Uart1 RX) – RS232 level
3	RS232 AUX TX (micro Uart1 TX) – RS232 level
4	+5V
5	RS485A
6	SIN2 (micro Uart2 RX) – TTL level
7	RS485B
8	SOT2 (micro Uart2 TX) – TTL level
9	I2C SCL (micro PIN SCL0)
10	I2C SDA (micro PIN SDA0)
11	IO7 (micro PIN PO7)
12	AN0 (micro PIN AN0)
13	IO6 (micro PIN PO6)
14	AN1 (micro PIN AN1)
15	IO5 (micro PIN PO5)
16	AN2 (micro PIN AN2)
17	IO4 (micro PIN PO4)
18	AN3 (micro PIN AN3)
19	IO3 (micro PIN PO3)
20	AN4 (micro PIN AN4)
21	IO2 (micro PIN PO2)
22	AN5 (micro PIN AN5)
23	IO1 (micro PIN PO1)
24	AN6 (micro PIN AN6)
25	IO0 (micro PIN PO0)
26	AN7 (micro PIN AN7)
27	EXT_AUX1 (reserved)
28	+5V
29	EXT_AUX0 (reserved)
30	+5V
31	GND
32	+5V
33	GND
34	+3V3
35	GND
36	+3V3
37	GND
38	+2V5
39	GND
40	+2V5

Note

- LED0-3 are connected to PIN PDRJ0- PDRJ3 directly

Contacts:

Italy

ElephantArt

Tel. +39.349.42.54.864

Fax. +39.0363.33.71.36

info@elephantart.it

<http://www.elephantart.it>