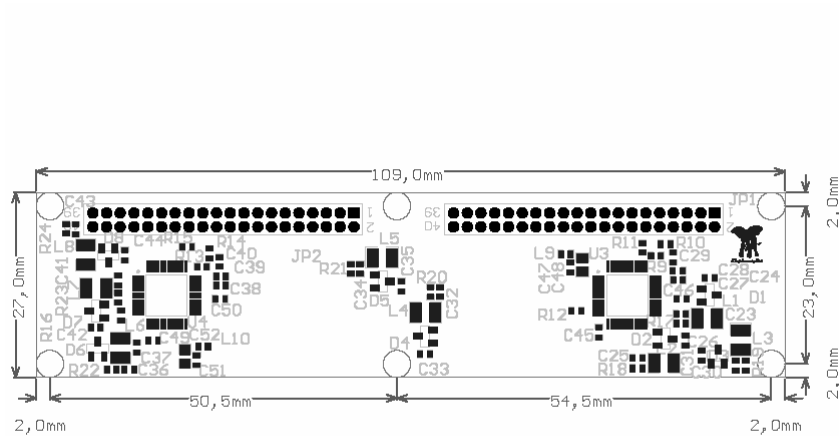
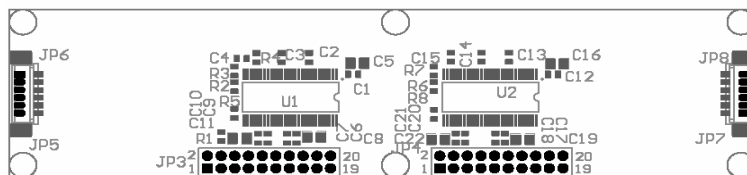


BOARD

GPIIA10-VGA



GPIIA10-LVDS



Description

The GPII_adapter board is all what you need for converts GraphicPlatform video output signal to LVDS standard or analog standard.

Technical characteristics:

- 2 analog video output (generated from digital video output)
- 2 LVDS video output (generated from digital video output)

Order numbers:

- GPIIA10-LVDS: converts Digital video RGB666 and RGB888 into LVDS format
- GPIIA10-VGA: converts Digital video RGB666 and RGB888 into analog video format

Connectors PINOUT

JP6 – JP8	
PIN	DESC
1	HSYNC
2	VSYNC
3	RED
4	GREEN
5	BLUE
6	GND

JP3 LVDS from RGB888 out	
PIN	DESC
1	STOUT3+
2	STOUT3-
3	SDPS
4	NC
5	GND
6	STCLKOUT+
7	STCLKOUT-
8	GND
9	STOUT2+
10	STOUT2-
11	GND
12	STOUT1+
13	STOUT1-
14	GND
15	STOUT0+
16	STOUT0-
17	GND
18	GND
19	+3V3
20	+3V3

JP4 LVDS from RGB666 out	
PIN	DESC
1	GND
2	GND
3	DPS
4	NC
5	GND
6	TCLKOUT+
7	TCLKOUT-
8	GND
9	TOUT2+
10	TOUT2-
11	GND
12	TOUT1+
13	TOUT1-
14	GND
15	TOUT0+
16	TOUT0-
17	GND
18	GND
19	+3V3
20	+3V3

Connectors manufacturer number:
 JP3-JP4: M22-2021005 HARWIN
 JP6-JP8: 53398-0610 MOLEX

Contacts:

Italy

ElephantArt

Tel. +39.349.42.54.864

Fax. +39.0363.33.71.36

info@elephantart.it

<http://www.elephantart.it>